

# CS STUDIO ARCHITECTS

---

## HELDERSTROOM PRISON: MESS RECREATION AND SPORTS FACILITIES DRY GOODS STORE AND FUEL STATION

LOCATION: CALEDON, WESTERN CAPE

DATE: 2000 - 2009

---

### BACKGROUND

In 2000 the National Department of Public Works (NDPW) appointed CS Studio Architects in association with Sudhier Magan Architects for the design of the prison, staff accommodation and public facilities. It was agreed that CS Studio would do the overall planning and layout for the project and then take the mess recreation and sports facilities, dry goods store and fuel station through the 5 work stages. CS studio was also responsible for the final landscaping. At the same time, Sudhier Magan Architects would design the 79 single family HB type houses.

The prison is an existing maximum security prison situated on the farm Helderstroom in the Caledon District. Existing farm structures were previously used for most of the recreational and public facilities. As the need for accommodation expanded, temporary housing was provided.

### DESIGN

When we analysed the site with the prison situated on top of the hill, it was decided to re-use the caravan and temporary housing sites for the housing scheme and to place the rest of the accommodation (area A and D) to the east of the prison.

CS Studio Architects challenged the national government departments not to use the standard government design drawings. After a presentation was made, the chief director of the NDPW, Mr Damstra approved our current design.

Mr Phillip Crafford, from NDPW arrived relatively late in the design process and informed us that all buildings had to have north south orientation and that building along the contours in order to save money was not an option.

A final design concept was therefore drawn up where the large multi – purpose centre gently straddles a few contours. With shallow ramps in the building, one is hardly aware of the level changes. The single quarter buildings that look like ships against the landscape were designed with a ramp in the passage while each room is at a different level. This avoided large portions of the buildings sticking out of the ground and allowed the buildings to hug the landscape.

The urban planning shows two spine roads which order the public multi-purpose centre complex at the entrance followed by the junior single quarters. The senior quarters are situated at a higher level/platform within the landscape. Area D is separated from the single family houses by a walkway which consists of 'pause' elements. The walkway is also framed with wild olive trees.

The multi-purpose centre houses a main indoor multi-purpose hall with changing and storage facilities. It also consists of a large kitchen, restaurant area and a bar, a golden curved shaped smaller multi-purpose hall, a shop, laundry, games room, library and at first floor a gym.

In addition, a fuel station is located next to this complex. As the NDPW norms only allow 11 square meters for a single quarter room, social areas, undercover areas and outdoor spaces became critical. The norms allowed for a 17m<sup>2</sup> sitting area per 14 rooms. Locating this space in the northern sun and connecting it to open landscaped areas and the washing yard of the next unit allows for it to be a social interactive space. The architectural language of the buildings, the colours and detailing were mostly inspired by the surrounding farm buildings.

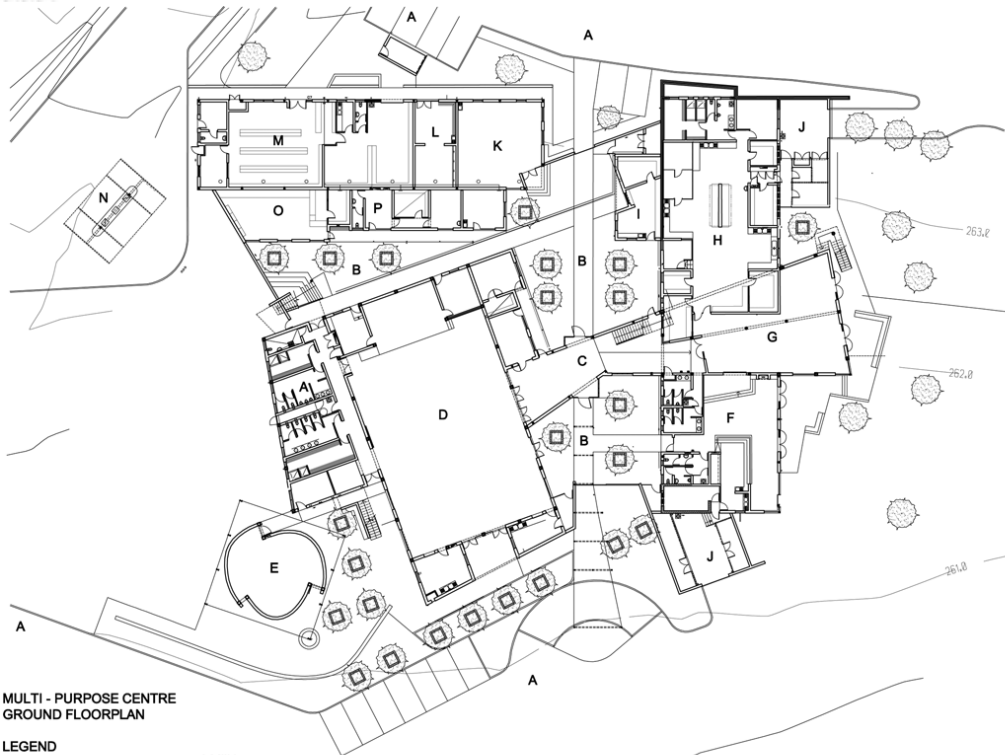
# CS STUDIO ARCHITECTS



## SITE PLAN

### Legend

- A - Multi-Purpose Centre
- B - Single Quarter
- C - Senior Quarter
- D - Fuel Station
- E - Houses

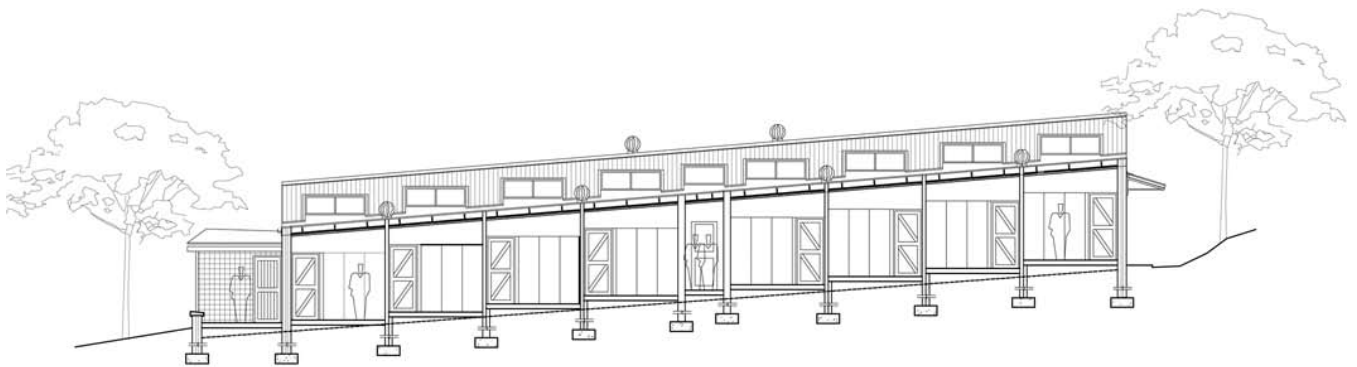
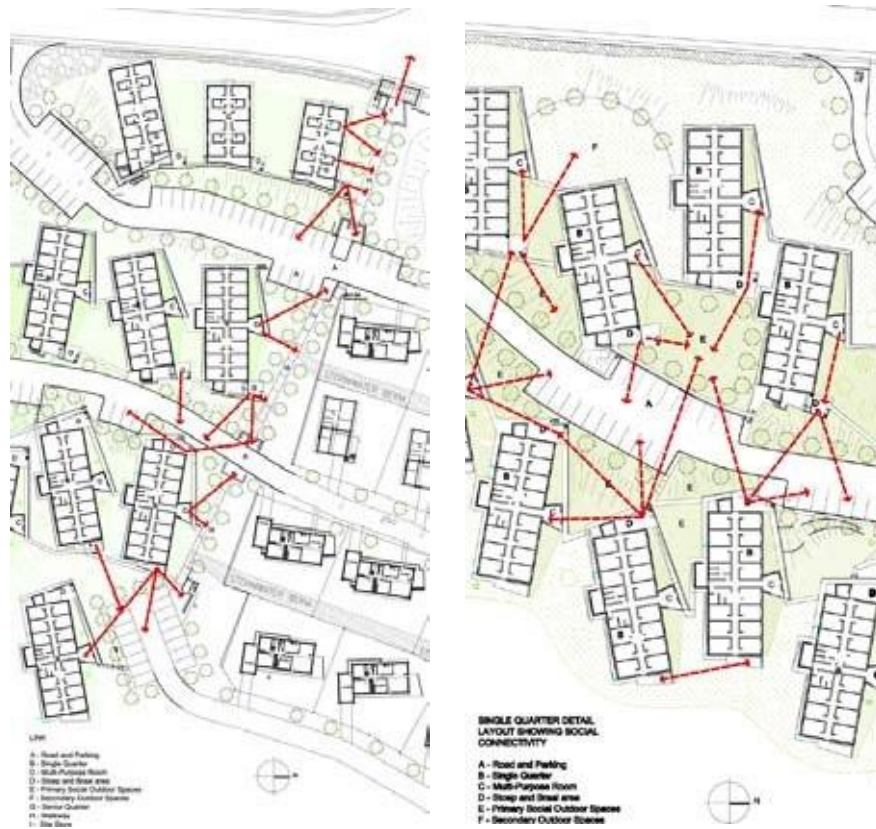


## MULTI - PURPOSE CENTRE GROUND FLOORPLAN

### LEGEND

- |                    |                   |
|--------------------|-------------------|
| A-Road and Parking | I-Milkbar         |
| B-Courtyard        | J-Delivery Yard   |
| C-Entrance/Foyer   | K-Games Room      |
| D-Hall             | L-Laundry         |
| E-Auxiliary Hall   | M-Dry Goods Store |
| F-Service Bar      | N-Fuel Station    |
| G- Members Dining  | O-Library         |
| H-Mess             | P-Surgery         |

# CS STUDIO ARCHITECTS



SECTION THROUGH SINGLE QUARTER



SINGLE QUARTER ELEVATION

# CS STUDIO ARCHITECTS

---



**NORTH ELEVATION**



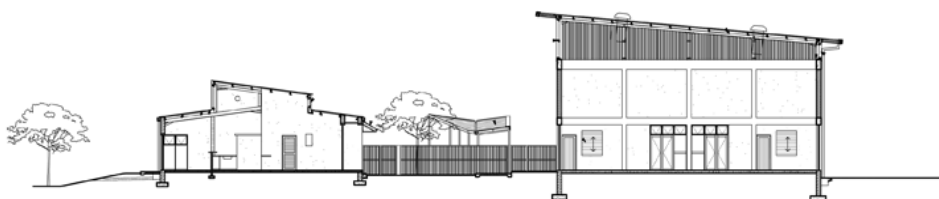
**WEST ELEVATION**



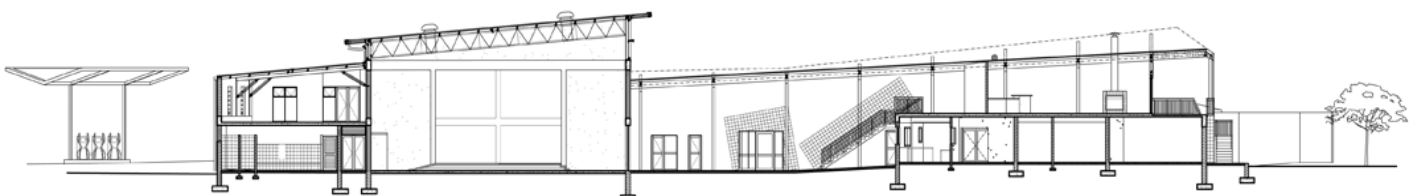
**SOUTH ELEVATION**



**EAST ELEVATION**



**SECTION THROUGH COURTYARD**



**SECTION THROUGH FOYER**