

CS STUDIO ARCHITECTS

UNOBUNTU MULTI-PURPOSE CENTRE

LOCATION: ZWELETEMBA, WORCESTER, WESTERN CAPE

DATE: 1990 - 1998

BACKGROUND

With the change of government in 1994, many new projects were initiated using the principles of the Reconstruction and Development Programme (RDP). In 1995 the Western Cape Provincial Department of Social Services embarked on a programme to build multi-purpose centres to address the social needs in historically neglected communities. CS Studio Architects were approached to assist in developing policy and guidelines for the implementation of these multi-purpose centres. The Unobuntu Centre evolved as a pilot project after Minister Rasool had promised the Worcester residents a multi-purpose centre.

During a public meeting the appropriate site for the centre was discussed at great length in order to decide whether it should be situated in the historically black, white or coloured area. After a vote was taken it was agreed to place this much needed centre in Zweletemba (the black township) due to the notable lack of facilities.

Three sites were identified in Zweletemba and an urban model was built to discuss the advantages and disadvantages of the different sites. The management committee, together with the residents in Zweletemba, then chose a site which is located at the end of the main road in Zweletemba, opposite the library.

DESIGN

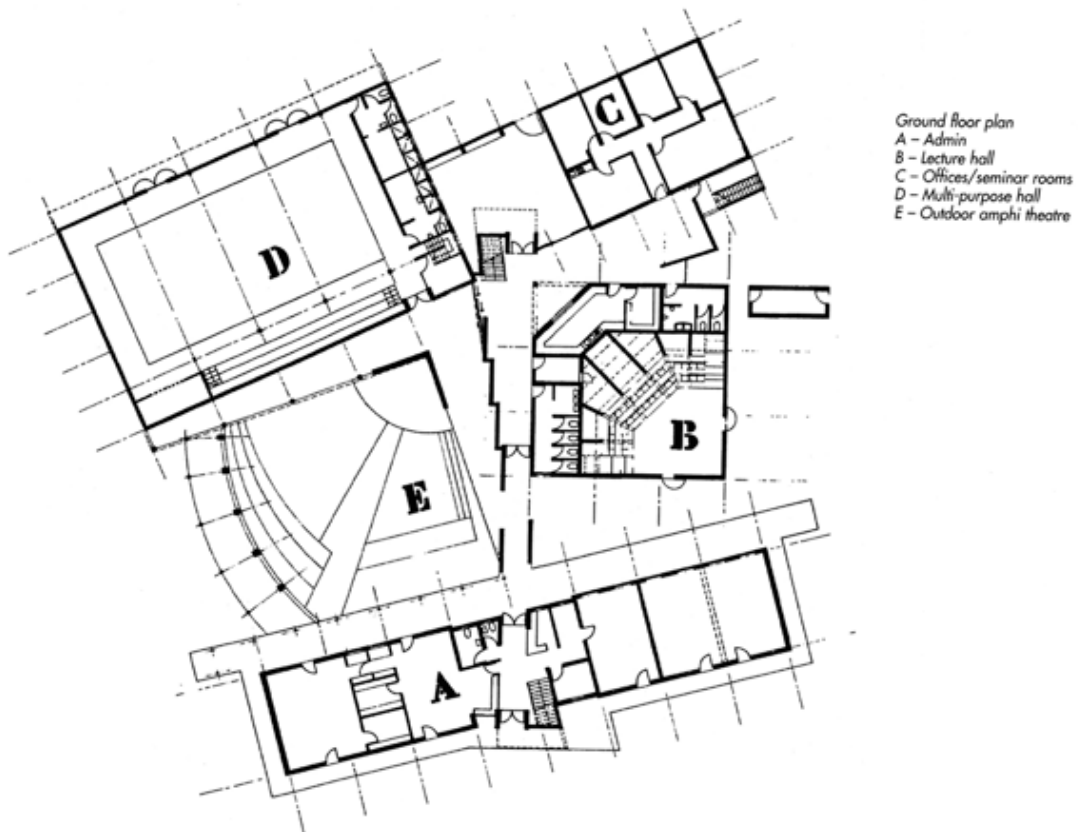
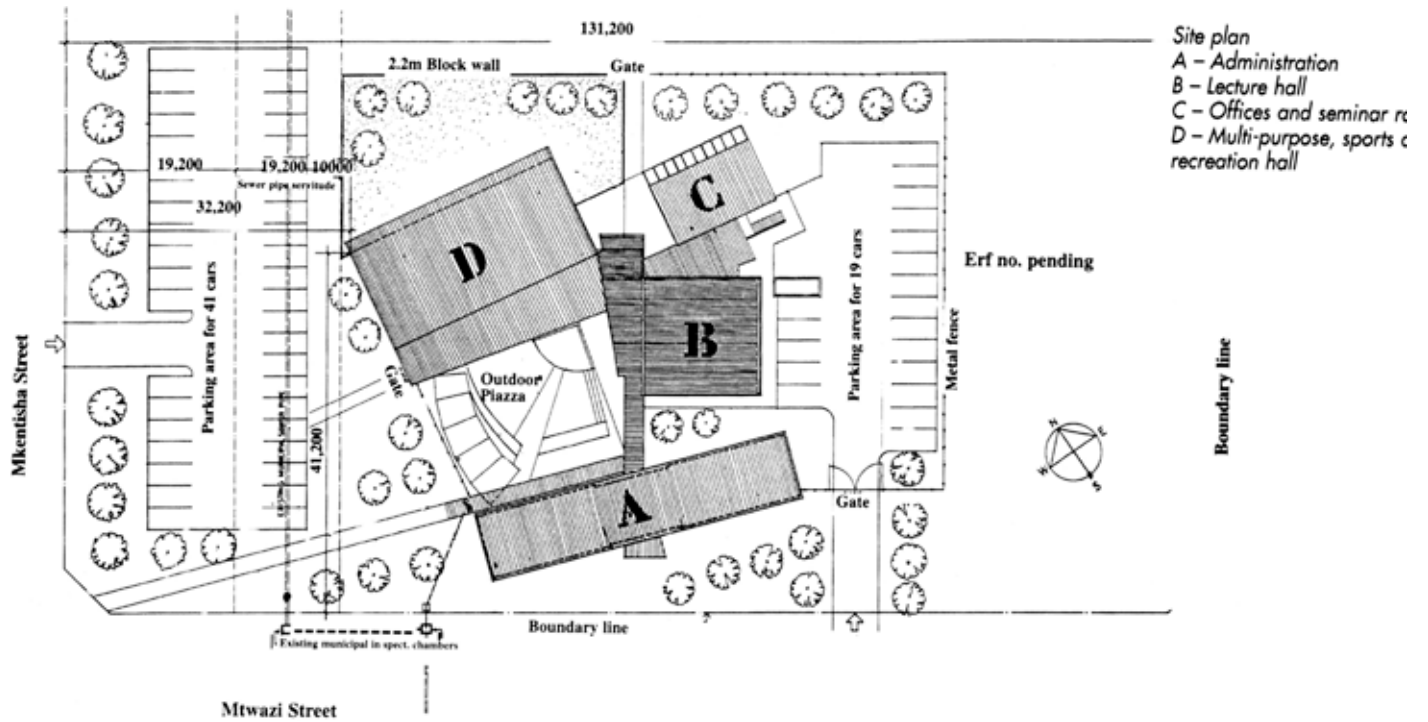
At the onset, it was decided to invite all the local organisations and groupings to the initial project identification and planning meetings. At times they were attended by up to 300 people who determined the overall vision for the project. The election of a project management committee followed, who received a mandate to implement the project on behalf of the Worcester residents.

The design project was also done as a process where the project management committee worked closely with the architects. Through a series of interactive models the design was finalized. The project management committee had the responsibility to obtain the broader organizational groups' approvals. This was an exciting process, as the design was improved after each intervention by the future users.

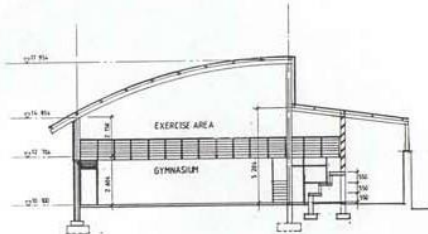
The overall design is made up of 4 main building blocks held together by the circulation spaces. The building blocks are juxtaposed to create exciting outdoor spaces and courtyards. The materials chosen were red and yellow face brick for the building blocks, while corrugated iron and coloured plaster were used to clad the linking elements. The building was completed in July 1998 and is successfully running as a multi-purpose centre.

Ten years after its completion the facility is surrounded by new housing and an informal settlement.

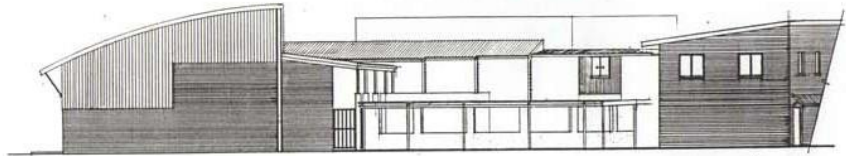
CS STUDIO ARCHITECTS



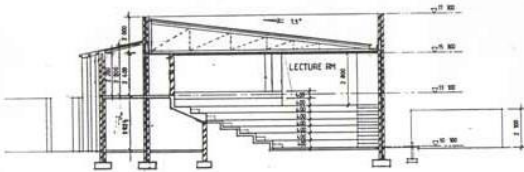
CS STUDIO ARCHITECTS



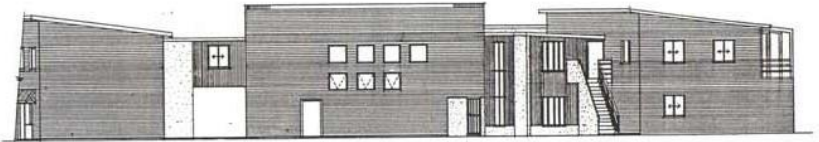
SECTION D-D



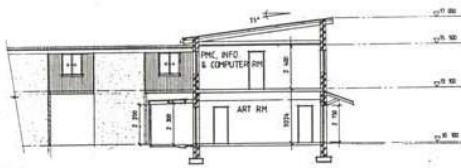
WEST ELEVATION ON BLOCK D, B, A



SECTION B-B



EAST ELEVATION ON BLOCK A, B, C



SECTION A-A



SOUTH ELEV. BLOCK A

UNOBUNTU MULTI PURPOSE CENTRE WORCESTER			
SECTIONS & ELEVATIONS			
Scale	Drawn	Date	C.S. STUDIO ARCHITECTS
1:100	URS	19-02-99	37 HURDLEY RD, WILLOWDALE, C.T. 8001
7603-01		TEL: 021 334 1278 FAX: 021 334 6158	