

CS STUDIO ARCHITECTS

RIVERSDALE MAGISTRATE COURTS EXTENTION

LOCATION: RIVERSDALE, WESTERN CAPE

DATE: 2008-2011

BACKGROUND

The Department of Public Works required that two new contemporary magistrate's courts be added to the existing facility in the town of Riverdale. In addition staff and magistrate's offices, holding cells as well as appropriate public waiting areas and services had to be accommodated on a tight site.

The original court building in Riverdale was built in 1932 and serves as a typical court design of its era. Its apartment style planning divided the entrance, waiting area and ablution facilities in the outbuildings.

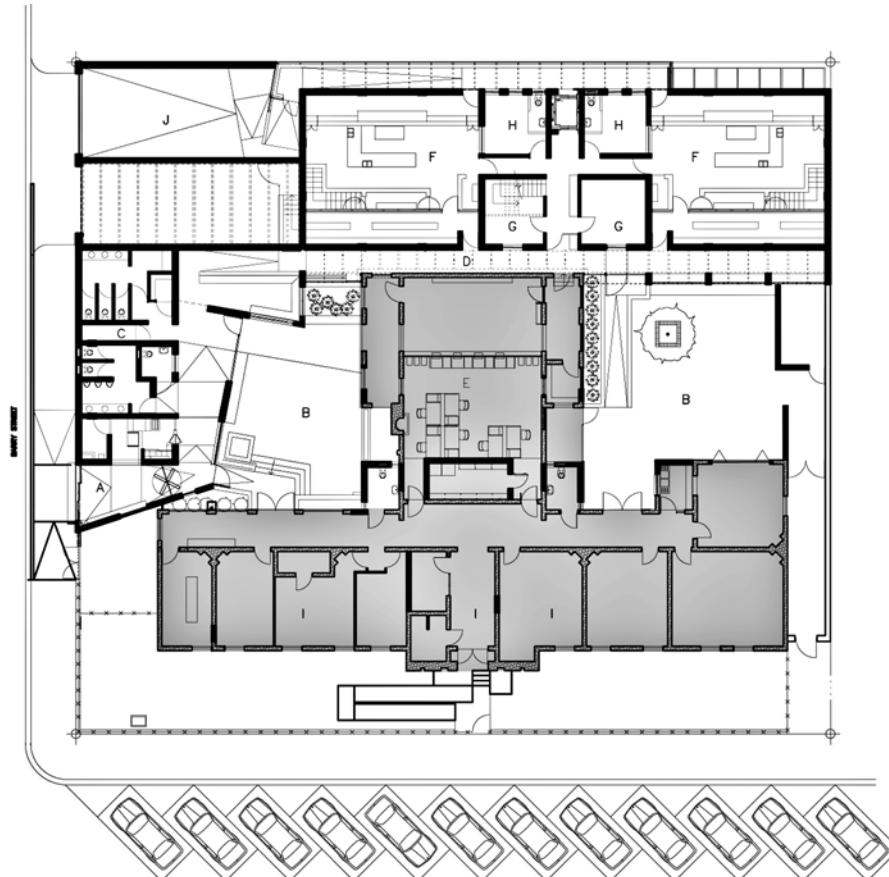
DESIGN

The concept of the project was to restore the historical building and to juxtapose the new extension as a clearly identifiable contemporary face brick building. The extension building provides a new public entrance on the north facade of the facility that serves both the old and new building. The old main entrance remains a staff entrance. Two landscaped court yards create outdoor waiting areas which serve as intermediate spaces to both the existing and new court buildings.

Throughout the initial design process there was an attempt to keep the old Kamfer trees as a central element to the overall design around the existing building. However, once construction started the foundation trenches proved that the roots of the trees were widely spread and would lift and crack the new building if it were to be retained.

The existing historical building was restored as closely as possible to its original state and hosts mostly office space and staff facilities while the old courtroom was converted into a new cash hall. The new two storey building hosts the magistrates and child care offices that form the central core of the building. The two new double volume magistrate court rooms are located on each side of the 'office core', while the holding cells are located in the basement. The new ablution block forms an edge towards Barry street while a gradually shaped ramp forms the entrance into the facility past the court yards and into the court rooms. A separate entrance has also been created for the prisoner drop off and for the Magistrates respectively.

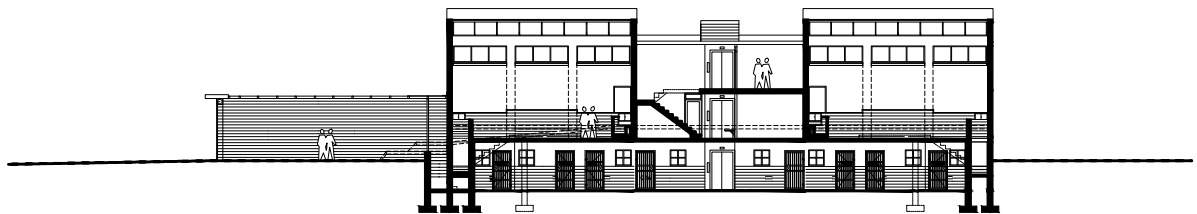
CS STUDIO ARCHITECTS



GROUND PLAN LAYOUT

- A - ENTRANCE
- B - COURT YARD
- C - ABLUTION BLOCK
- D - CORRIDOR
- E - CASH HALL
- F - COURT ROOM
- G - OFFICES
- H - CHILD ROOM
- I - EXISTING BUILDING
- J - PARKING
- - EXISTING BUILDING

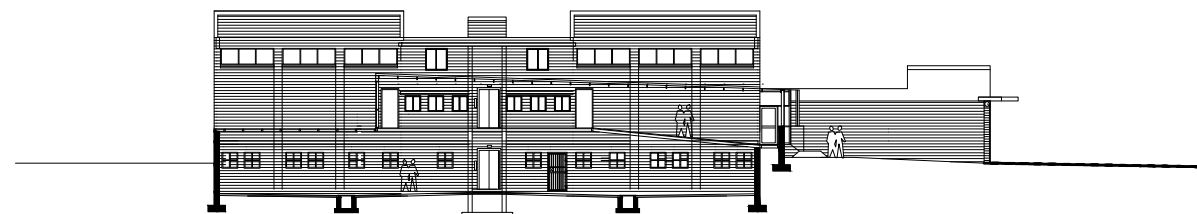
WORLD'S STREET



SECTION H-H

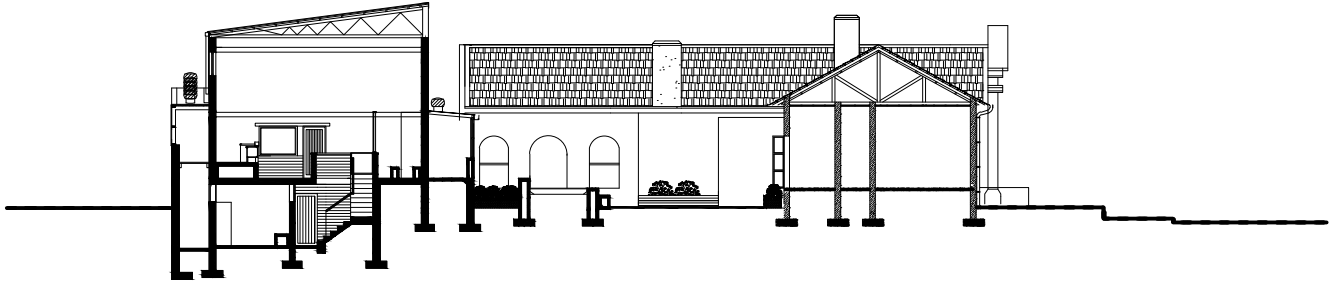


SECTION G-G

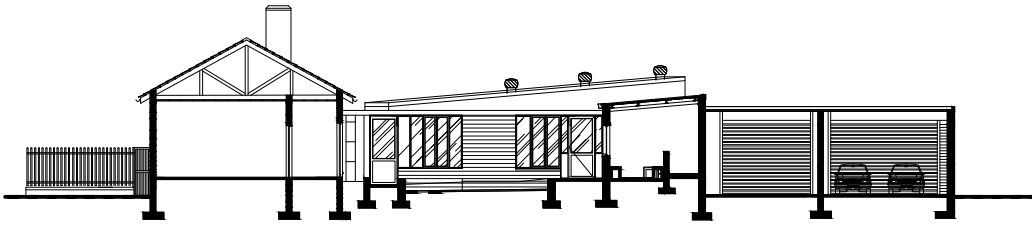


SECTION I-I

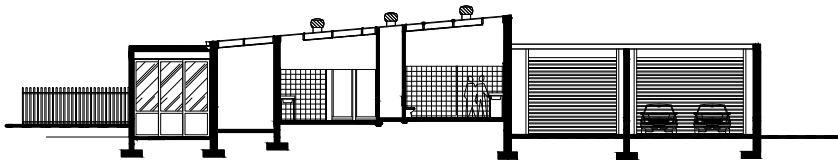
CS STUDIO ARCHITECTS



SECTION D-D

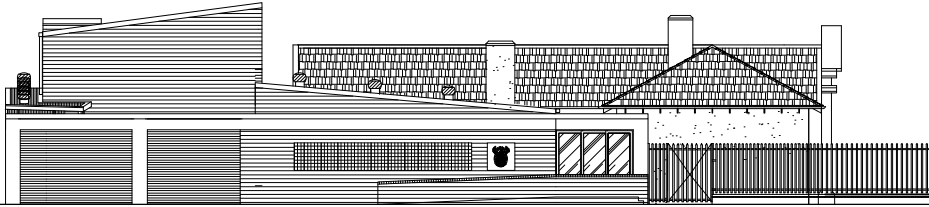


SECTION E-E

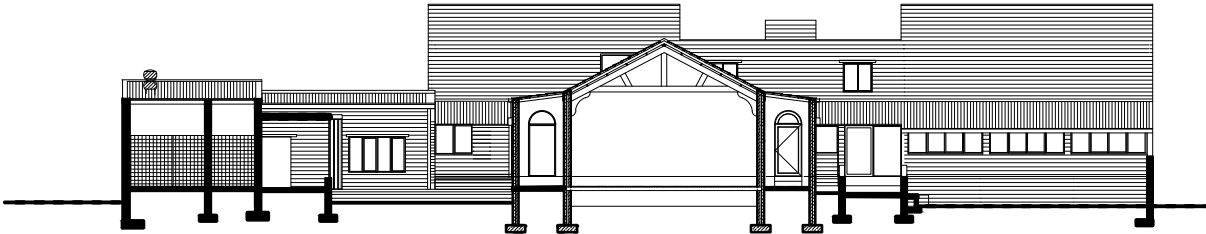


SECTION N-N

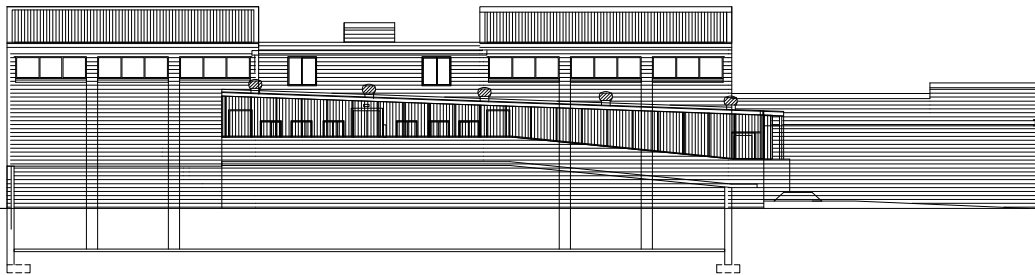
CS STUDIO ARCHITECTS



WEST ELEVATION



SECTION K-K



SOUTH ELEVATION